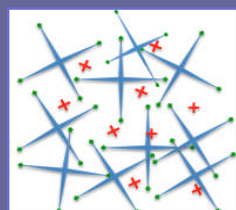


### Introduction

The ReSure™ Adherent Ocular Bandage (Ocular Therapeutix, Inc.) is an innovative hydrogel designed to cover and protect clear corneal incisions post-cataract and intraocular lens placement surgery.

The hydrogel is composed primarily of water (approximately 90%) and polyethylene glycol. The 100% synthetic material is applied as a liquid and polymerizes on the ocular surface. As the incision re-epithelializes, the material gently softens and sloughs off in the tear fluid.

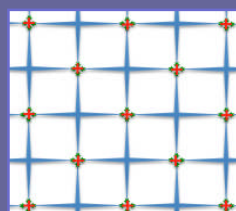
### Chemistry



#### Liquid

Before gelation

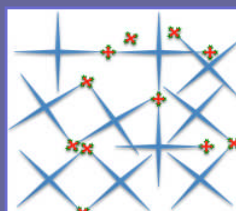
PEG and amine remain in solution



#### Solid

PEG and trilytine crosslink to form hydrogel

Polymerized gel adheres to deepithelialized tissue



#### Bioabsorbable

Links gradually break

Hydrogel softens and sloughs off in tear fluid

### Objectives

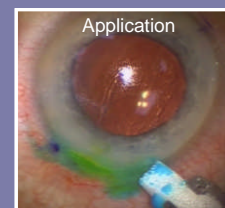
The Clinical Trial was designed to evaluate the safety and performance of the ReSure Bandage and establish non-inferiority to the control device (Soft Shield® Collagen Corneal Shield, Oasis) (CCS).

Co-primary effectiveness endpoints:

- Device performance: material localized on the incision at 24 hours
- Maximal acute post-operative pain

24-hour evaluations:

- Slit Lamp
- Best Corrected Visual Acuity (BCVA)
- Intraocular Pressure (IOP)



### Methods

Prospective, randomized parallel arm, multicenter study conducted at 17 clinical sites in the United States.

Subject Randomization (3:1):

316 ReSure Bandage subjects  
 104 CCS subjects  
 420 subjects total

Follow-up assessments:

1 Hour      3 Days  
 4 Hours      7 Days  
 24 Hours      30 Days

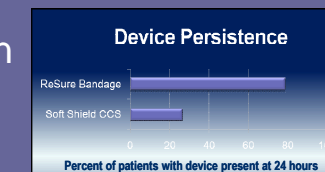
The ReSure Adherent Ocular Bandage is an investigational device that is not approved for use in the United States.

The ReSure Adherent Ocular Bandage is CE Mark Approved.

### Results: 24 Hours

Device Performance:

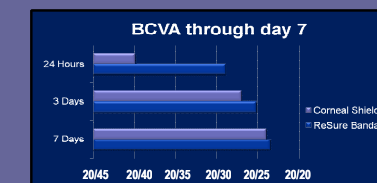
- Material localized over incision at 24hrs (p<0.0001)



- Stromal edema at 24 hours (p=0.0083)
  - ReSure group: 97.5% of patients experienced zero to only mild stromal edema
  - CCS group: 87.5% of CCS patients experienced zero to mild stromal edema

- Epithelial edema at 24 hours (p=0.0209)
  - ReSure group: 89.9% of patients experienced zero to only trace amounts of epithelial edema
  - CCS group: 81.7% of patients experienced zero to trace amounts of epithelial edema

- BCVA at 24 hours (p<0.0001)



- IOP and pain at 24 hours
  - No clinically meaningful differences between the two groups

### Conclusions

The ReSure Bandage Group:

- More consistent wound coverage
- Better BCVA at 24 hours
- Less corneal and stromal edema